

## Media Release

### Spring Bioscience launches highly sensitive PD-L1 (SP142) antibody for immunotherapy research

 [PDF](#)

*Robust antibody gives researchers early access to PD-L1 and immunotherapy tissue staining for Research Use Only (RUO) applications*

PLEASANTON, Ca., August 25, 2014 – [Spring Bioscience \(Spring\)](#), a member of the Roche Group, today announced the launch of its PD-L1 (SP142) rabbit monoclonal immunohistochemistry (IHC) antibody<sup>1</sup>. This new PD-L1 clone was developed for Roche/Genentech's anti-PD-L1 (MPDL3280A) immunotherapy development program and included in research of various tumor types.

As pharmaceutical companies continue to research and develop cancer drugs that target the immune system, measuring the amount of PD-L1 protein expressed on tumor cells and tumor-infiltrating immune cells may help assess the efficacy and durability of investigational drugs that inhibit the binding of the PD-L1 protein.

Internal comparison studies performed at Spring demonstrated that the PD-L1 (SP142) antibody outperformed other commercially available PD-L1 antibodies. *“As with all IHC antibodies developed by Spring, the SP142 antibody will deliver the high quality and accuracy that translational researchers need to confidently assess PD-L1 status in tissue samples,”*



---

#### VMSI Media Relations

Jacqueline Bucher  
Senior Director, Corporate Communications  
Ventana Medical Systems, Inc.  
Tel 520.877.7288 o  
Tel 520.468.9145 m  
e-mail: [Jacquie Bucher](mailto:Jacquie.Bucher)

said Michael Rivers, GM, Spring Bioscience.

## PD-L1 Immunostaining in lung carcinoma

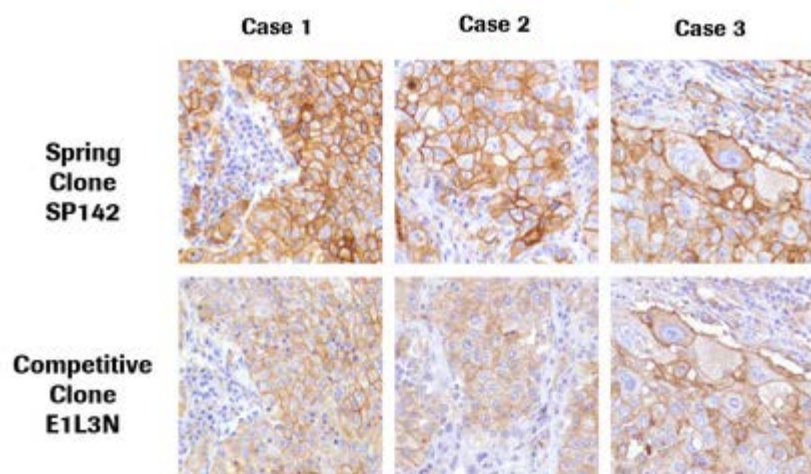


Image 1: Comparative IHC staining of representative lung carcinoma samples. Strong staining is observed in tissues stained with the Spring clone SP142, while weak to moderate staining is observed in tissues stained with the competitive clone E1L3N.

*“The PD-L1 (SP142) antibody was designed to be very sensitive and specific. As researchers strive to understand the clinical relevance of PD-L1 expression, this clone may offer a superior ability to stain and analyze both tumor and immune cells,”* said Doug Ward, VP and Lifecycle Leader, Ventana Companion Diagnostics. *“Ventana and Spring are committed to delivering gold standard biomarker detection solutions for companion diagnostic tests.”*

Spring Bioscience is known across the research industry for its quality development practices and for delivering a consistent supply of highly-specific antibodies. SP142 meets the company's high standards as a valuable tool for assessing PD-L1 expression in many different tumor types.

---

Recommended staining protocols are available for manual, semi-automated and VENTANA DISCOVERY platforms for decreased assay development times.

To order or request additional information on SP142, please visit [springbio.com](http://springbio.com) or call (800) 787-6896 or (925) 474-8440. Orders can also be submitted via e-mail at [spring.orders@ventana.roche.com](mailto:spring.orders@ventana.roche.com) with technical detail available through [spring.tech@ventana.roche.com](mailto:spring.tech@ventana.roche.com).

<sup>1</sup>PD-L1 (SP142) Rabbit Monoclonal Antibody is for Research Use Only

(RUO). Not for use in diagnostic procedures.

### **About Spring Bioscience**

[Spring Bioscience, Inc.](#) (Spring) is a leading developer of rabbit monoclonal antibodies, engineered for immunohistochemistry (IHC) and other applications in tissue-based cancer research. Founded by scientists with a primary focus on IHC, Spring has developed a proprietary menu of highly-sensitive antibodies (SP clones) that yield superior specificity and consistency in research and clinical practice. Spring is committed to high-quality development standards and also offers a portfolio of advanced detection and other complementary products for reliable, reproducible assessments of protein expression. Spring Bioscience was acquired by [Ventana Medical Systems, Inc.](#), a member of the [Roche](#) Group, in 2007. As an antibody center of excellence for Roche with strong pharmaceutical partnerships across the industry, Spring is at the frontier of antibody development for companion diagnostics, IVD and early clinical markers. Learn more at [Springbio.com](#).

### **About Ventana Medical Systems, Inc.**

[Ventana Medical Systems, Inc.](#) ("VMSI") (SIX: RO, ROG; OTCQX: RHHBY), a member of the [Roche](#) Group, innovates and manufactures instruments and reagents that automate tissue processing and slide staining for cancer diagnostics. VENTANA products are used in clinical histology and drug development research laboratories worldwide. The company's intuitive, integrated staining, workflow management platforms, and digital pathology solutions optimize laboratory efficiencies to help reduce errors, support diagnosis and enable informed treatment decisions by anatomic pathology professionals. Together with Roche, VMSI is driving [Personalized Healthcare](#) through accelerated drug discovery and the development of "companion diagnostics" to identify the patients most likely to respond favorably to specific therapies.

---

© 2014 Ventana Medical Systems, Inc.  
VENTANA, the VENTANA logo and DISCOVERY are trademarks of Roche.

[Terms and conditions](#) | [Privacy Policy](#)